

REMOVABLE ARCH

YAKIMA VALVE (R.A.Y.)

FOR INSTALLATION IN CONCRETE PIPE

This valve provides a heavy duty single-ring frame with a removable arch for use where Universal Hydrants will not be used. The cover, screw and removable arch are the same units used in our Alfalfa Valves. They include the same rugged cast-in bushings, synthetic rubber ring packing, sturdy oversize brass stem, and exclusive eccentric-lock arch retainer.

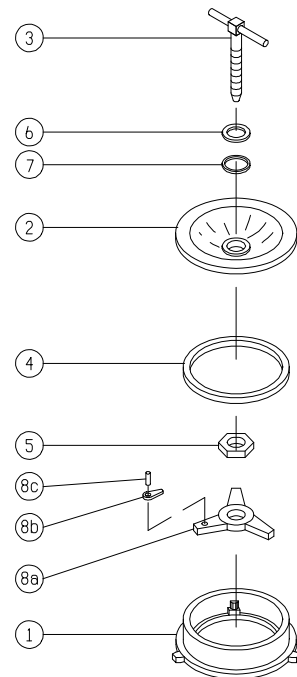
Fast-acting national standard form threads (vee) will be shipped threads require only three (3) turns to move the cover one in



REMOVABLE ARCH YAKIMA VALVE PARTS GUIDE *									
REMOVABLE ARCH YAKIMA VALVE PARTS									
SIZE	COVER		SCREW		FRAME		ARCH		
8"	8A	W151	7/8"	8A	W510	8"RAY	W134	8"ALF	W152
10"	10A	W155	1"	10A	W511	10"RAY	W135	10"ALF	W158
12"	12A	W159	1 1/8"	12A	W512	12"RAY	W136	12"ALF	W162
14"	14A	W163	1 1/4"	16A	W513	14"RAY	W137	14"ALF	W166
16"	16A	W128	1 1/4"	16A	W513	16"RAY	W138	16"ALF	W168
18"	18A	W130	1 1/4"	20A	W514	18"RAY	W139	18"ALF	W170
20"	20A	W132	1 1/4"	20A	W514	20"RAY	W179	20"ALF	W172

* Numbers beginning with "W" (example: "W130", etc.) are casting numbers which can be located on each cast part. Numbers which do not begin with "W" are parts designations also found on most castings (example: "16A").

PARTS LIST		
No.	Name	Qty.
1	FRAME	1
2	COVER	1
3	SCREW	1
4	PACKING	1
5	NUT	1
6	WASHER	1
7	O-RING	1
8	REMOVABLE ARCH	1
8a	ARCH	1
8b	ECCENTRIC	1
8c	PIN	1



To order parts, specify quantity, valve name and size, cover style, (Red Top, Sunshine, or Pasture) and part name shown.