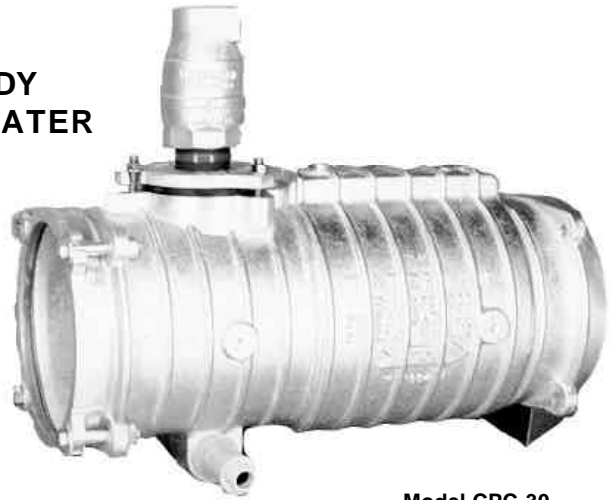


CPC-30 CHEMIGATION CHECK VALVE

- CORROSION RESISTANT ALUMINUM BODY
- PREVENTS CONTAMINATION OF WATER SUPPLY
- MEETS MOST CHEMIGATION AND BACKFLOW PREVENTION SPECIFICATIONS FOR AGRICULTURE
- PROVIDES FOR SAFE INJECTION OF FERTILIZERS AND CHEMICALS
- COMPLETELY UNITIZED
- CERTIFIED IN MOST STATES TO MEET LOCAL "CHEMIGATION" LAWS



Model CPC-30
Sizes: 4" - 12"

USES:

In-line installation in aluminum, plastic or steel pipelines.

FEATURES:

Heavy duty cast aluminum body may be fusion epoxy-coated inside for corrosion resistance.

Heavy duty cast aluminum disc, epoxy-coated, with watertight Buna-N seal.

Positive spring-loaded closing action. Stainless steel spring.

4" inspection port.

Model D-34 automatic low pressure drain valve with 3/4" hose fitting included.

Integral low volume flow dam with sump.

Unrestricted flow (disc is raised above nominal pipeline diameter).

OPTIONAL:

Waterman vacuum breakers:

AV-150, AVP-1, CRP-8, VR-125, CR-100, AVR-2.

AV-150 available with epoxy coating.

NOTES:

1. Model CPC-30B may be mounted in tandem for increased protection when used with toxic chemicals.
2. Compression joints adaptable to IPS, PIP, OD or SDR-35 pipe sizes (specify gasket).

To Order:

Specify Model CPC-30-1 for Compression joint both ends.

Specify Model CPC-30-2 for Flanged both ends.

Specify Model CPC-30-3 for Flanged end x compression joint.

MODEL D-34 LOW PRESSURE DRAIN VALVE

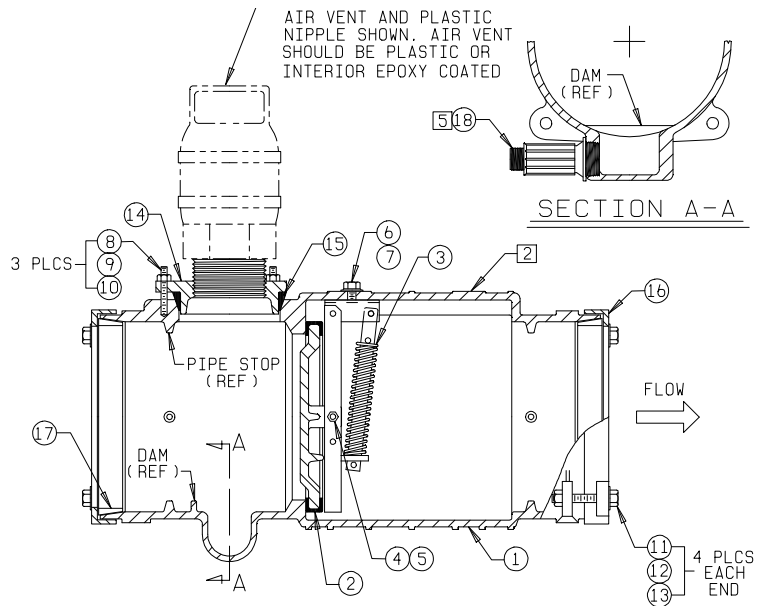
Widely used as an emergency drain for chemigation valves, this unit is of heavy PVC construction and incorporates a 3/4" hose thread outlet. Spring loaded disc is designed to close with 2 PSI back pressure to prevent unwanted discharge while pump is in use.



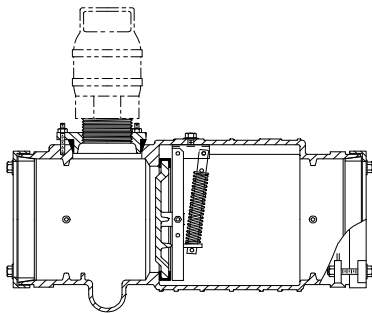
Model D-34

CHEMIGATION CHECK VALVE

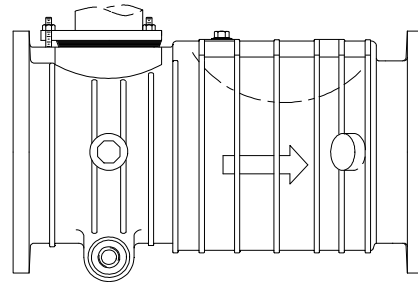
PARTS LIST	
No.	Name
1	Body
2	Cast Cover & Seat
3	Spring Loaded Hinge Assy.
4	Socket Hd. Shoulder Bolt
5	Lock Nut
6	Hex Bolt (Special)
7	Washer-Seal
8	Stud
9	Washer-Flat
10	Hex Nut
11	Hex Hd. Bolt
12	Washer-Flat
13	Hex Nut
14	Cover-Inspection Port
15	Gasket
16	Follow Ring
17	Gasket
18	Drain Valve (Low Pressure)



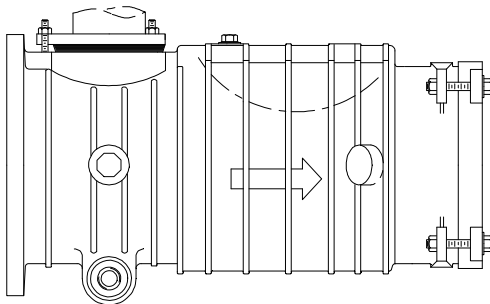
1. All interior aluminum surfaces epoxy coated.
2. Boss may be field tapped for pressure gauge.
3. Low pressure drain may be moved to opposite side by specifying on order or field tapping sump.
4. Bosses (2 each side) may be tapped for injection ports.
5. 3/4" hose thread on low pressure drain valve - 1 1/2" NPT into valve body.



-1 Compression joint both ends



-2 Flanged both ends
(125# drilling, standard)



-3 Flanged end x compression joint

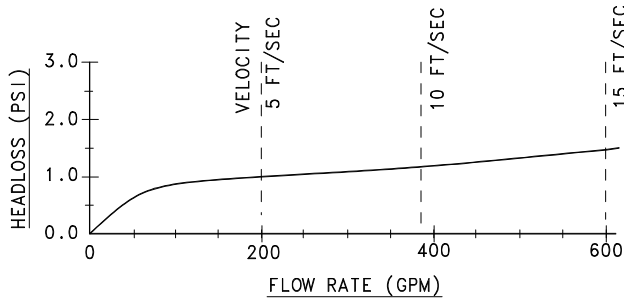
Size	OVERALL LENGTH			Max. PSI	Maximum Flow (G.P.M.) Under Use
	-1	-2	-3		
4"	20 3/8"	18 1/2"	19 3/4"	150	360*
6"	21"	18 1/2"	19 3/4"	120	850*
8"	23"	20"	21 1/2"	100	1500*
10"	27"	24"	25 1/2"	100	2400*
12"	N/A	27"	N/A	100	3500*

* Flow at 10 Feet per second velocity

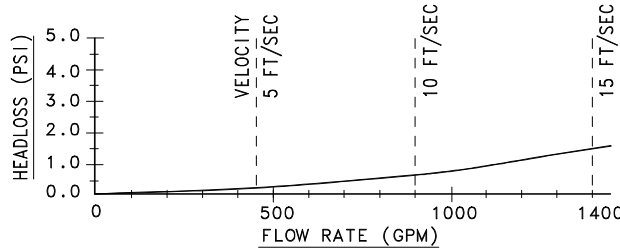
CPC-30 CHEMIGATION CHECK VALVE FLOW RATE CHARTS

CHECK VALVES

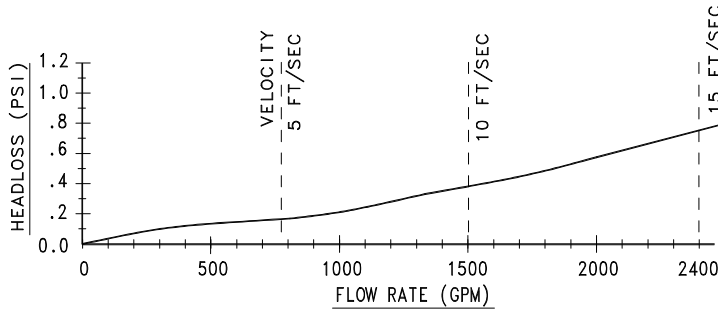
4" CPC-30B



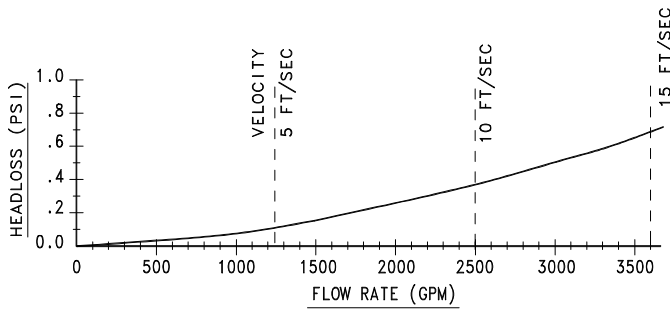
6" CPC-30B



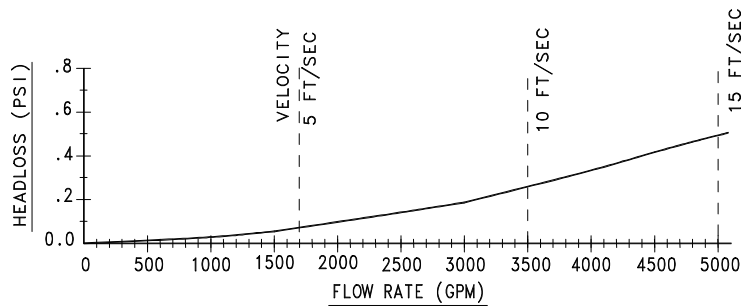
8" CPC-30B



10" CPC-30B



12" CPC-30B



Notes:

1. Graphs represent actual test results of Waterman Chemigation Valves that were tested at Center for Irrigation Technology, Fresno State University, Fresno, California.
2. Performance of individual valves may vary from that shown due to spring and hinge assembly variations.
3. Chemigation Valves meet the requirements specified in SCS specification 430-EE (1982), 430-DD (1982), and ASAE Standard S447 (1991), S376 (1981).